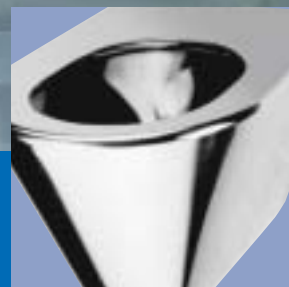
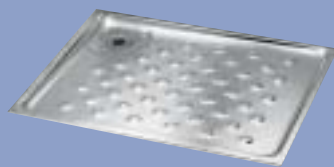


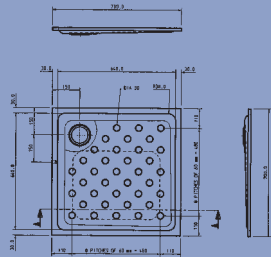
# Shower Trays and Toilets CAMPUS



# Shower Trays and Squat Pans



**Shower Tray**  
**CMPX 400**  
**CMPX 401**  
**CMPX 402**  
**CMPX 404**



**Description:**

Manufactured as a one piece pressing from 18/10 stainless steel with rounded internal corners, slip resistant patterned base and a 38 mm BSP grated waste fitting in corner position, with screw for electric grounding.

**Applications:**

Hospitals, Factories, Sports & Leisure centres, Prisons, Police stations, etc.

**Dimensions:**

700x700 mm  
 800x800 mm  
 900x700 mm  
 900x900 mm

**Model:**

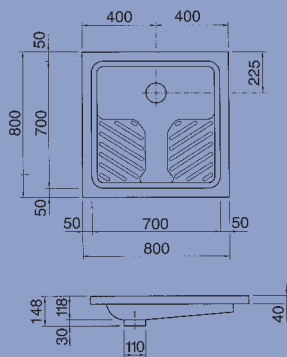
**CMPX 400**  
**CMPX 401**  
**CMPX 402**  
**CMPX 404**

**EAN-Code:**

7612210016882  
 7612210016899  
 7612210016905  
 7612210017544



**Squat Pan**  
**BS 500/BS 501**



**Description:**

Manufactured as a one piece pressing from 18/10 stainless steel, suitable for floor recessed or floor standing installation with slip resistant patterned foot areas and rounded internal corners. On the underside: earthing bolt.

**Applications:**

Railway stations, Prisons, Motorway service stations, Public toilets, etc.

**Dimensions:**

800x800x148 mm  
 900x900x148 mm

**Model:**

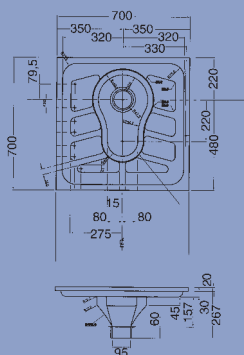
**BS 500**  
**BS 501**

**EAN-Code:**

7612210507908  
 7612210507915



**Squat Pan**  
**CMPX 502**  
**with flushing**  
**inlet**



**Description:**

Squat pan, manufactured from 18/10 stainless steel, thickness 1.0 mm; suitable for recessed and insert mounting, slip resistant patterned foot areas.

**Applications:**

Railway stations, Prisons, Motorway service stations, Public toilets, etc.

**Dimensions:**

700x700x267 mm  
 700x700x267 mm

**Model:**

**CMPX 502**  
**with flushing inlet**  
**CMPX 503**  
**without flushing inlet**

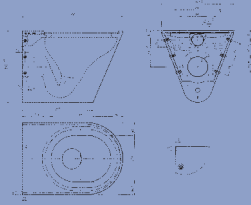
**EAN-Code:**

7612210010514  
 7612210010521

# Squat Pans, Floor Standing and Wall Hung WC Pans



## Wall Hung WC CMPX 570-572



### Description:

Wall hung WC pan, manufactured from 18/10 stainless steel to a satin finish finish, with a shrouded 100 mm diameter horizontal 'P' trap outlet, a concealed flushing rim with a 6 litre flushing capacity. Most types of toilet seat can be used with this WC pan.

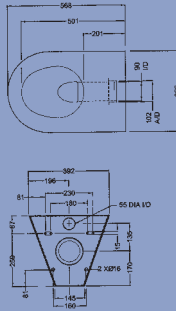
### Applications:

Railway stations, Motorway service stations, Public toilets, etc.

	Model:	EAN-Code:
standard	CMPX 570	7612210016769
with seat pads	CMPX 571	7612210017261
with toilet seat	CMPX 572	7612210017278



## Wall Hung WC CMPX 519-521



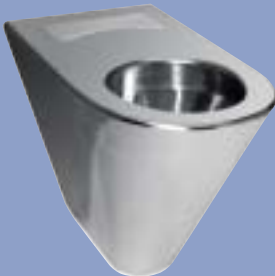
### Description:

Wall hung WC pan, manufactured from 18/10 stainless steel to a satin finish finish, with a shrouded 100 mm diameter horizontal 'P' trap outlet, a concealed flushing rim with a 6 litre flushing capacity. Most types of toilet seat can be used with this WC pan. Dimensions: 342x568x392mm

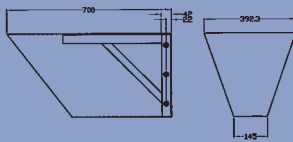
### Applications:

Railway stations, Motorway service stations, Public toilets, etc.

	Model:	EAN-Code:
standard	CMPX 519	7612210009716
with seat pads	CMPX 520	7612210010118
with toilet seat	CMPX 521	7612210010125
	satin finished	
	satin finished	
	satin finished	



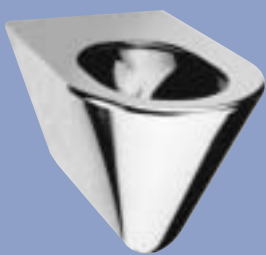
## Wall hung toilet CMPX 523-526



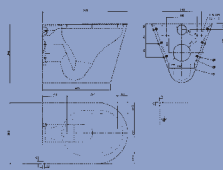
### Description:

Wall hung toilet pan for disabled people, manufactured from stainless steel 18/10, tested to EN 997, water flushing quantity 6 l. Dimensions: 392x700x355 mm

	Model:	EAN-Code:
standard	CMPX 523	7612210010491
with seat pads	CMPX 524	7612210010507
with toilet seat	CMPX 525	7612210010569
nur mit Bohrungen	CMPX 526	7612210011030



## Wall hung toilet CMPX 579-581



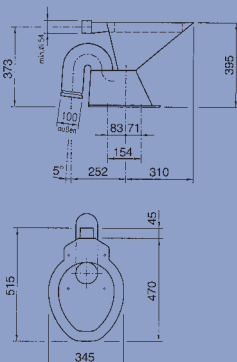
### Description:

Wall hung toilet pan, manufactured from stainless steel 18/10, tested to EN 997, water flushing quantity 6 l. Dimensions: 360x348x500 mm

	Model:	EAN-Code:
standard	CMPX 579	7612210017483
with seat pads	CMPX 580	7612210017490
with toilet seat	CMPX 581	7612210017506



## Pedestal W.C. Pan BS 506-BS 511



### Description:

Floor standing pedestal W.C. pan, manufactured from 18/10 stainless steel to a high polish finish, available with either 100 mm Ø 'P' or 'S' trap outlet and concealed flushing rim with a 6 litre flushing capacity. Dimensions: 345x515x395 mm

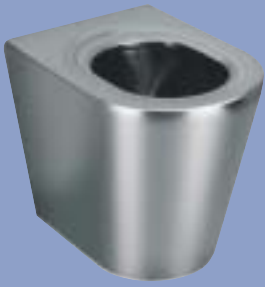
### Applications:

Railway stations, Motorway service stations, Public toilets, etc.

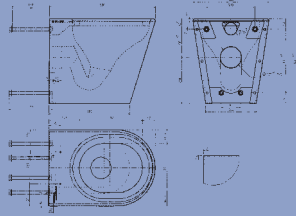
	Dimensions:	Model:	EAN-Code:
P-Trap	standard	BS 506	7612210507922
P-Trap	with additional seat pads	BS 507	7612210507939
P-Trap	with white toilet seat	BS 508	7612210507946
S-Trap	standard	BS 509	7612210507953
S-Trap	with additional seat pads	BS 510	7612210507960
S-Trap	with white toilet seat	BS 511	7612210507977

BS 509

# Disabled Persons Wall Hung WC Pans, Urinals



**Floor Standing  
WC pan  
CMPX 573-575**



**Description:**

A back to wall floor standing WC pan, manufactured from 18/10 stainless steel to a satin finish polish, with a shrouded 100 mm diameter horizontal 'P' trap outlet, a concealed flushing rim with a 6 litre flushing capacity. Most types of toilet seats can be used with this WC pan.  
Dimensions: 360x500x400 mm

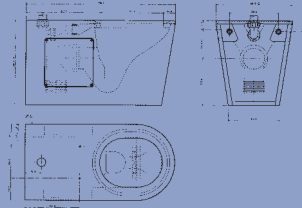
**Applications:**

Railway stations, Motorway service stations, Public toilets, etc.

	<b>Model:</b>	<b>EAN-Code:</b>
standard	<b>CMPX 573</b>	7612210016776
with seat pads	<b>CMPX 574</b>	7612210017285
with toilet seat	<b>CMPX 575</b>	7612210017292



**Disabled  
Persons Wall  
Hung W.C. Pan  
CMPX 576-578**



**Description:**

A wall hung WC pan, manufactured from 18/10 stainless steel to a satin finish polish, with a shrouded 100 mm diameter horizontal 'P' trap outlet, concealed flushing capacity and rear extension (with side access service panels) for use by wheelchair users and disabled persons - overall length 700 mm Most types of toilet seats can be used with this WC pan.  
Dimensions: 360x700x400 mm

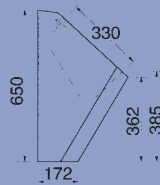
**Applications:**

Railway stations, Motorway service stations, Public toilets, etc.

	<b>Model:</b>	<b>EAN-Code:</b>
standard	<b>CMPX 576</b>	7612210016783
with seat pads	<b>CMPX 577</b>	7612210017308
with toilet seat	<b>CMPX 578</b>	7612210017315



**Single urinal  
CMPX 300**



**Description:**

Single urinal, manufactured in stainless steel 18/10, surface satin finish, with spout 1/2" and valve, outlet horizontal, appropriates DIN 15999.

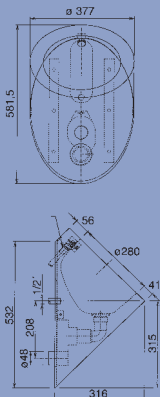
**Applications:**

Railway stations, Motorway service stations, Public toilets, etc.

<b>Dimensions:</b>	<b>Model:</b>	<b>EAN-Code:</b>
300x390x650 mm	<b>CMPX 300</b>	7612210015762



**Single Urinal  
CMPX 530  
CMPH 530**



**Description:**

Single urinal, manufactured from stainless steel 18/10, surface satin finished, outlet horizontal, Siphon included

**Applications:**

Railway stations, Schools, Hospitals, Public toilets, Motorway service stations, Military barracks, Conference halls

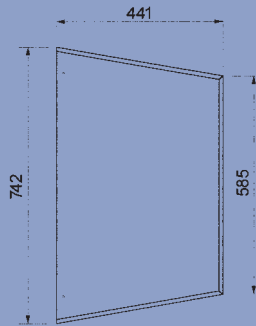
<b>Dimensions:</b>	<b>Model:</b>	<b>EAN-Code:</b>
377x316x581,5 mm	<b>CMPX 530</b> satin finished	7612210015748
377x316x581,5 mm	<b>CMPH 530</b> high polished	7612210007132





# Urinal divider, Floor standing urinal

## Urinal divider CMPX 700



### Description:

Urinal partition wall, manufactured in stainless steel 18/10, surface in structure WL5, with high security screws

### Applications:

Military barracks, public toilets, Motorway service stations

### Dimensions:

62x441x742 mm

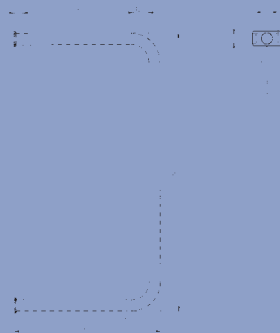
### Model:

CMPX 700

### EAN-Code:

7612210016394

## Urinal divider CMPX 560



### Description:

Urinal partition wall, manufactured in stainless steel 18/10

### Dimensions:

30x400x760 mm

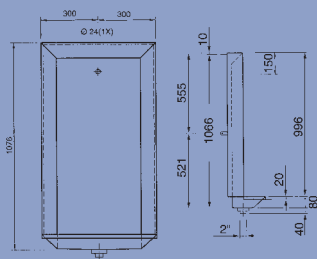
### Model:

CMPX 560

### EAN-Code:

7612210015731

## Floor Standing Urinal BS 550 - BS 553



### Description:

Manufactured from 18/10 stainless steel polished to a satin finish as a one piece construction with finished side panels. The urinal is fitted with 15 mm back inlet button spreaders at 600 mm spacings, 50 mm grated waste fitting in Centre position and is suitable for floor recessed or floor standing installations.

### Applications:

Railway stations, Schools, Public toilets, Motorway service stations, etc.

### Dimensions:

600x260x1076 mm  
1200x260x1076 mm  
1800x260x1076 mm  
2400x260x1076 mm

### Model:

BS 550  
BS 551  
BS 552  
BS 553

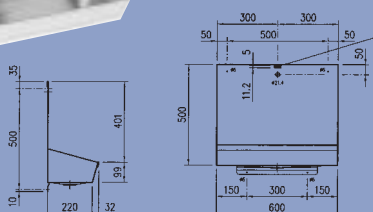
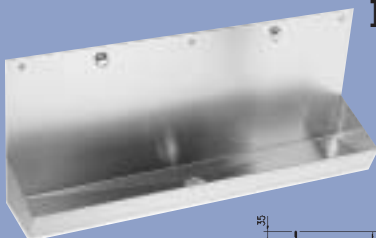
### Jet

1  
2  
3  
4

### EAN-Code:

7612210508301  
7612210508318  
7612210508325  
7612210508332

## Wall Hung Trough Urinal BS 544 - BS 547



### Description:

Manufactured from 18/10 stainless steel polished to a satin finish as a one piece construction. The urinal is fitted with 15 mm back inlet button spreaders at 600 mm spacings, 38 mm grated waste fitting at L or R hand end and complete with wall brackets. Screws and dowels included.

### Applications:

Motorway service stations, Asylum homes, Schools, etc.

### Dimensions:

600x252x500 mm  
1200x252x500 mm  
1800x252x500 mm  
2400x252x500 mm

### Model:

BS 544  
BS 545  
BS 546  
BS 547

### Jet

1  
2  
3  
4

### EAN-Code:

7612210000218  
7612210522253  
7612210522260  
7612210522277



Franke GesmbH  
Oberer Achdamm 52  
A-6971 Hard  
Austria

Telephone +43 5574 6735 0  
Telefax +43 5574 62411  
[www.franke-wss.com](http://www.franke-wss.com)